

fits
you_



Offshore Services _ROV_



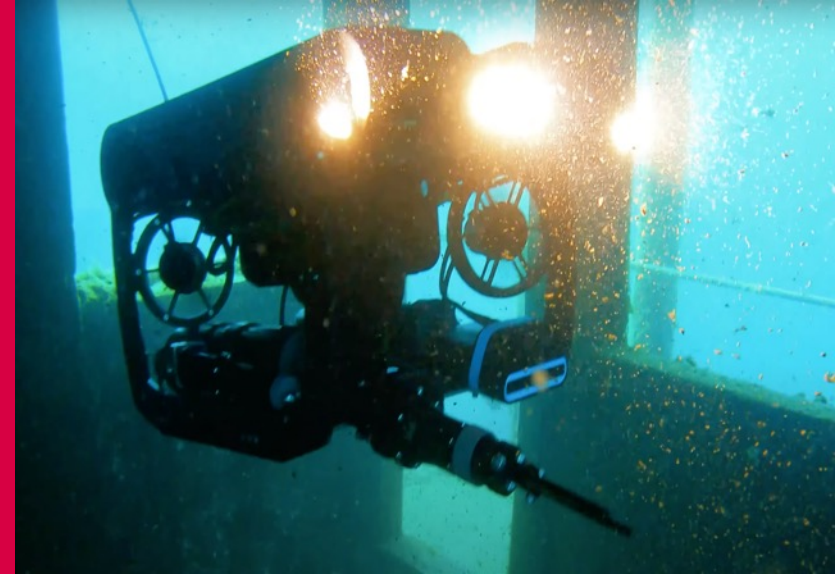
For Internal Use Only—Not For External Distribution This document is the property of PCC Integrity. It contains proprietary and confidential information

ROV: Underwater Surveys_



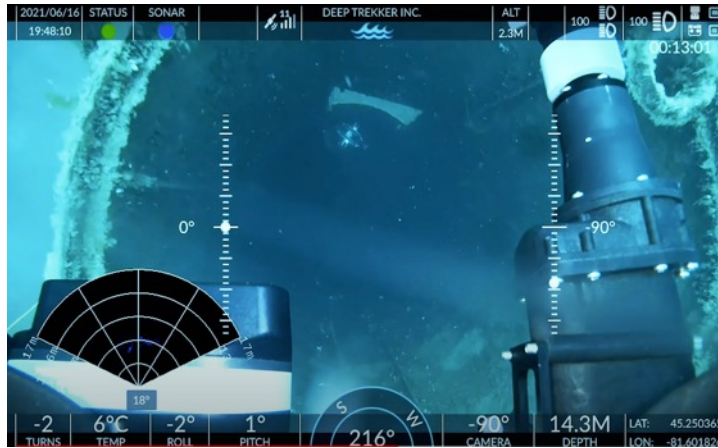
”

Reduce uncertainty and achieve
safer and more effective direct
inspections



Capabilities?_

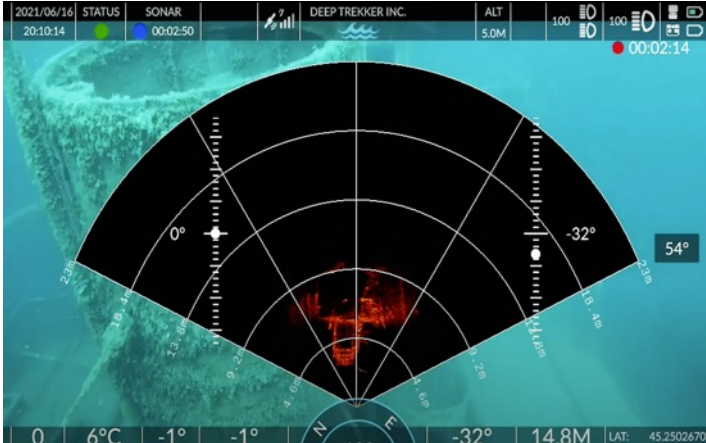
Up to 300 m depth



Precision sonar equipment for location and object detection



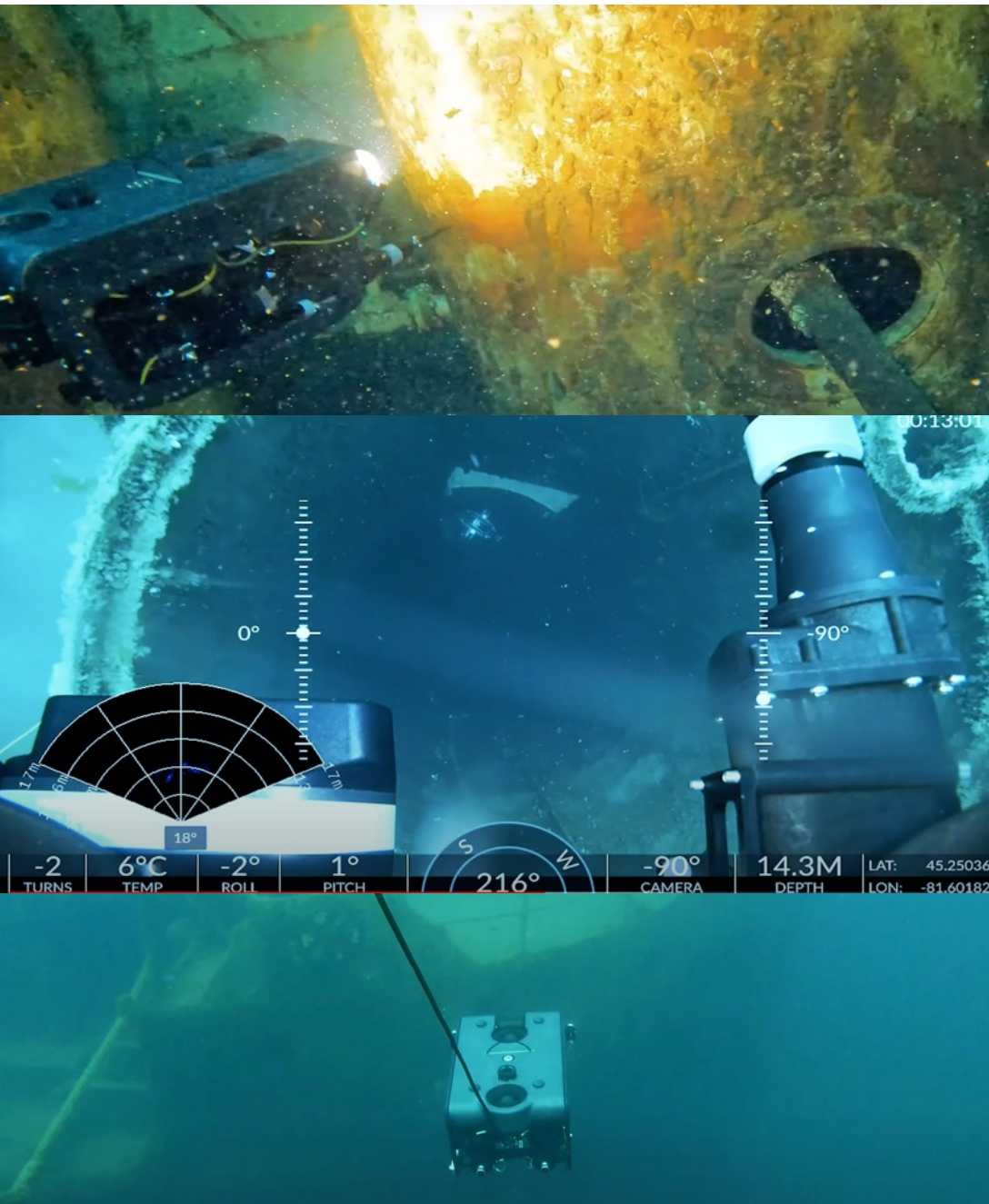
Tools for inspection, collection and handling



■ Beyond human Capabilities_

- The capacity of divers is limited in time. With our ROV we increase to full days of uninterrupted inspection
- We get to places where humans don't. Reaching a depth of up to 300 m, it is possible to measure, manipulate and inspect infrastructure that is unreachable under normal conditions.
- Our ROV ensures to mitigate the risk to personnel due to decompression, poisoning, wildlife and technical failures.





Integrity Tools_



System 1: IR-Free Potentials
By installing the bathycorrometer tool we can carry out the direct measurement of potentials in pipes



System 2: Thicknesses
By installing the thickness measurement tool, it is possible to carry out direct tests



System 3: Multiparameter Water Analysis
The multiparameter specimen is capable of taking data on pH, oxygen, resistivity, chlorides, temperature, pressure, among others.



System 4: Sample Collection
For biological analysis, it is possible to take water and sediment samples



Application: Infrastructure_



Docks, PLEM, subsea platforms and pipelines

It is possible to reach facilities more quickly, effectively, and in a prolonged and uninterrupted manner.



CIPS inspections, resistivities, thicknesses, visuals and physicochemical analyses

Ability to more accurately and tool-feed ecosystems and infrastructure.



Precise localization and tracing

With Sonar and satellite location tools, it is possible to detect and locate the facilities accurately



www.pccintegrity.com